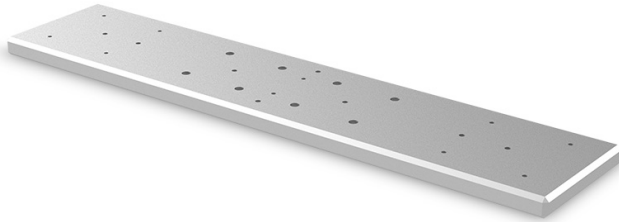




# CMPT036 | DATASHEET

## Description



**CMPT plates** are mechanical components designed to build optical benches for measurement applications.

Most Opto Engineering® telecentric lenses and illuminators can be mounted on these plates using CMHO clamping mechanics. For very accurate measurement applications, calibration patterns can be precisely mounted in front of the lens with the CMPH pattern holders, enabling perfect calibration of the optical system.



## SPECIFICATIONS

### Mechanical specifications

Length	(mm)	477.0
Width	(mm)	103.0
Height	(mm)	15.0
Mass	(g)	1944

## COMPATIBILITY

This products is compatible with:

- CMHO036

Compatible pattern holder:

- CMPH036-056

## COMPATIBLE PRODUCTS

Full list of compatible products available [here](#).



A wide selection of innovative machine vision components.

All product specifications and data are subject to change without notice to improve reliability, functionality, design or other. Photos and pictures are for illustration purposes only. Data are reported by design, actual lens performance may vary due to manufacturing tolerances.