

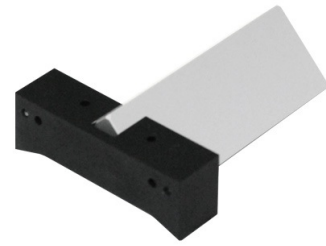


# SPPS002

Right angle prism, legs 33.3 mm, H 72 mm, mirror coating

## SPECIFICATIONS

Description	Right angle prism, legs 33.3 mm, H 72 mm, mirror coating
Type	Right angle prism
Coating	Aluminium reflective coating
Deviation angle	90
Compatibility	TCCAGExx096



## COMPATIBLE PRODUCTS



<b>TCCAGE12096</b>	Bi-telecentric multi-mirror system for 1/2" detectors
<b>TCCAGE23096</b>	Bi-telecentric multi-mirror system for 2/3" detectors