



# LTZGK070-15-3-G-24V

LED ringlight, 3 LED rows, outer diameter 70 mm, 15°, green, 24V

## SPECIFICATIONS

### Optical specifications

Light color, peak wavelength		green, 525nm
Working distance	(mm)	85
Lighting area		
Inner	(mm)	37
Outer	(mm)	67
Emission angle	(deg)	15

### Electrical specifications

Illumination extension cable	Extension cable must be ordered separately <b>4</b>	
------------------------------	---	--

#### Continuous mode

Supply voltage	(V)	24
Current	(mA)	240
Power consumption	W	5.8

#### Pulsed mode

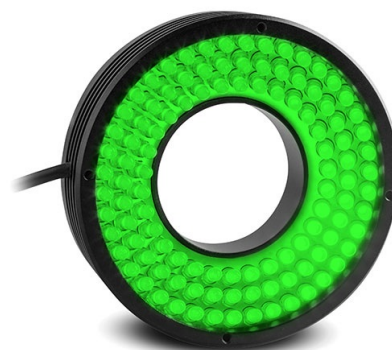
Supply voltage <b>1</b>	(V)	36
Max pulse current <b>2</b>	(mA)	720

### Mechanical specifications

Inner diameter	(mm)	32
Outer diameter	(mm)	70
Height	(mm)	20,5

### Environment

IP rating	00
-----------	----



## NOTES

1. With constant driving voltage (36V recommended, 48V max). Duty cycle = 0-10 %. Max pulse width = 10 ms.
2. With constant driving current. Duty cycle = 0-10 %. Max pulse width = 10 ms.

## ORDERING INFORMATION

All accessories including lighting extension cables (CB series), diffusers (DFLT series), polarizers (PLLT series) and mounting brackets (CMLT series) must be ordered separately.

### COMPATIBLE PRODUCTS



<b>LTDV1CH-17V</b>	Strobe controller 1 channel variable current 5 mA - 17A
--------------------	---



<b>DFLTZGK070-15-3</b>	Diffuser for LED ringlight, 3 LED rows, outer diameter 70 mm, 15°
------------------------	---



<b>PLLTZGK070-15-3</b>	Polarizer for LED ringlight, 3 LED rows, outer diameter 70 mm, 15°
------------------------	--