

LTVTA1-W

Complete View-through illuminators system - small size medium power white

SPECIFICATIONS

Optical specifications

Dome unit

Number of LEDs		15
Light color		white, 6000K
Spectral FWHM	(nm)	-
Illumination area diameter	(mm)	40
Suggested working distance WD	(mm)	5-25
Minimum estimated illumination at driving current = 3.5 A 1	(klux)	290
Minimum estimated illumination at driving current = 7.5 A 1	(klux)	490
Aperture range	(mm)	48 (fixed)

Active backlight view-through unit

Number of LEDs		18
Light color		white, 6000K
Spectral FWHM	(nm)	-
Diffusive material		yes
Illumination area diameter	(mm)	40
Suggested working distance WD	(mm)	-
Minimum estimated illumination at driving current = 17.0 A 1	(klux)	5

Electrical specifications

Power supply mode		Strobe only, constant current driving
Pulse width 2	(ms)	≤ 1
Connection type 3		M8 industrial male connector

Dome unit

Driving current, min-max	(A)	3.5 - 7.5
Pin 1		Stage1 +
Pin 2		Stage1 +
Pin 3		Stage1 -
Pin 4		Stage1 -

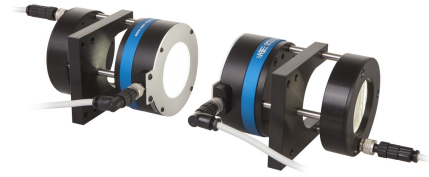
Active backlight view-through unit

Driving current, min-max	(A)	3.5 - 17.0
Estimated MTBF 4	(hours)	> 50000
Pin 1		Stage2 +
Pin 2		Stage2 +
Pin 3		Stage2 -
Pin 4		Stage2 -

Mechanical specifications

Length	(mm)	399
Width	(mm)	80
Height	(mm)	165
Material		Black anodized aluminum body
Clamping system		4 Threaded holes for m6 screw

Compatibility



Lenses	TCLWD series, RT series
Cable (dome unit)	CBLT004
Cable (backlight unit)	CBLT003

Environment

Operating temperature	(deg)	0-40
Storage temperature	(deg)	0-50
Humidity		20-85% non condensing
IP rating		-
Installation		Indoor use only

NOTES

1. At maximum working distance (WD)
2. At 25°C. At max pulse width (1 ms), max pulse frequency = 15 Hz.
3. PIN 1 and PIN 2 for the dome unit, PIN 3 and PIN 4 for the ringlight unit.
4. At 25 °C.
5. Cables included.

COMPATIBLE PRODUCTS



LTDV6CH

Strobe controller 6 channels