

LTLAB2-G

Diffusive strobed low angle ring light illuminator - medium size high power green



OPTO ENGINEERING

SPECIFICATIONS

Optical specifications

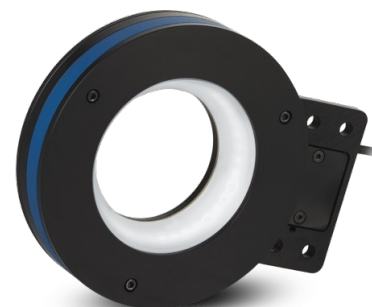
Number of LEDs		40
Light color		green, 525 nm
Spectral FWHM	(nm)	35
Diffusive ring		yes
Illumination area diameter	(mm)	60
Suggested working distance WD	(mm)	5-50
Minimum estimated illumination at driving current = 3.5 A ¹	(klux)	50
Minimum estimated illumination at driving current = 7.5 A ¹	(klux)	90
Minimum estimated illumination at driving current = 17.0 A ¹	(klux)	180
Aperture range	(mm)	64 (fixed)

Electrical specifications

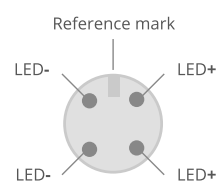
Power supply mode		strobe only, constant current driving
Driving current, min	(A)	3.5
Driving current, max	(A)	17.0
Pulse width ²	(ms)	≤ 1
Connection type ³		M12 industrial male connector
Estimated MTBF ⁴	(hours)	> 50000
Pin 1		LED +
Pin 2		LED +
Pin 3		LED -
Pin 4		LED -

Mechanical specifications

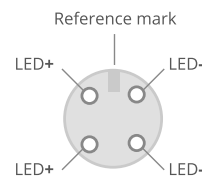
Length	(mm)	166.5
Width	(mm)	133
Height	(mm)	38
Material		black anodized aluminum body



CONNECTION



Illuminator side - male pins
 Front view
 - thread: **M12**, industrial
 - description: **receptacle**, straight
 - plug-in contact type: **male**
 - number of contacts: 4



Cable side (front view)
 Pin
 Cable color
 LED+
 Black
 Brown
 LED-
 Blue
 White

Do not remove parallelization



Clamping system	4 holes for M6 screw
-----------------	----------------------

Compatibility

Strobe controllers	LTDV1CH-17, LTDV6CH
Lenses	TC2300y, TC23012, TC12016, TC23016, TC12024, TC23024, TCxx036, TC2MHR016-x, TC2MHR024-x, TC2MHR036-x, TC4M004-x, TC4M007-x, TC4M009-x, TC4MHR016-x, TC4MHR024-x, TC4MHR036-x, TC16M009-x, TC16M012-x, TC16M018-x, TC16M036-x, TCLWD series, TCZR036, MCZR033-008, MCZR025-006, MCZR018-004, MCZR014-003, MC150X, MC100X, MC075X, MC050X, MC033X, RT series, MC4K050X-x, MC4K075X-x, MC4K100X-x, MC4K125X-x, MC4K150X-x, PCHI0xx
Cable	CBLT001, CBLT002

Environment

Operating temperature	(deg) 0-40°C
Storage temperature	(deg) 0-50°C
Humidity	20-85% non condensing
IP rating	-
Installation	indoor use only

NOTES

1. At max Working Distance W.D.
2. At 25°C. At max pulse width (1 ms), max pulse frequency = 15 Hz.
3. 5 m cable with straight female connector included. Optional cable with right angled connector is also available and must be ordered separately (refer to our website for further info and ordering codes).
4. At 25°C.

COMPATIBLE PRODUCTS



PCHI013	Hole inspection optics for 1/3" detectors
PCHI012	Hole inspection optics for 1/2" detectors
PCHI023	Hole inspection optics for 2/3" detectors



LTDV6CH	Strobe controller 6 channels
LTDV1CH-17V	Strobe controller 1 channel variable current 5 mA - 17A
LTDV1CH-17	Strobe controller 1 channel 17 A



CBLT001	Illumination cable PVC black, side 1 M12 connector straight, side 2 cable end - 5 m - for single stage systems
CBLT002	Illumination cable PVC black, side 1 M12 connector right angled, side 2 cable end - 5 m - for single stage systems