



LT2WRH200-00-1-G-24V

LED tunnel light, 200x183 mm, green, 24V

SPECIFICATIONS

Optical specifications

Light color, peak wavelength		green, 525nm
Working distance	(mm)	40 - 60
Lighting area		
Length	(mm)	124
Width	(mm)	147

Electrical specifications

Illumination extension cable	Extension cable must be ordered separately 4	
------------------------------	---	--

Continuos mode

Supply voltage	(V)	24
Current	(mA)	400
Power consumption	W	9.6

Pulsed mode

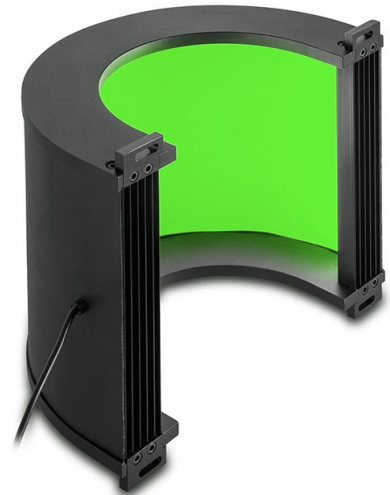
Supply voltage 1	(V)	36
Max pulse current 2	(mA)	1200

Mechanical specifications

Width x Length	(mm)	227 x 163
Aperture	(mm)	25
Height	(mm)	131.5

Environment

IP rating	00
-----------	----



NOTES

1. With constant driving voltage (36V recommended, 48V max). Duty cycle = 0-10 %. Max pulse width = 10 ms.
2. With constant driving current. Duty cycle = 0-10 %. Max pulse width = 10 ms.

ORDERING INFORMATION

All accessories including lighting extension cables (CB series) , diffusers (DFLT series) , polarizers (PLLT series) and mounting brackets (CMLT series) must be ordered separately.

COMPATIBLE PRODUCTS



MC4K050X-F	Macro lens for 4k linescan cameras, magnification 0.50x, F-mount
MC4K050X-N	Macro lens for 4k linescan cameras, magnification 0.50x, mount M42X1 FD = 10.56
MC4K075X-F	Macro lens for 4k linescan cameras, magnification 0.75x, F-mount
MC4K075X-N	Macro lens for 4k linescan cameras, magnification 0.75x, mount M42X1 FD = 10.56



LTDV1CH-17V	Strobe controller 1 channel variable current 5 mA - 17A
--------------------	---