



LT2WRH150-00-1-R-24V

LED tunnel light, 150x183 mm, red, 24V

SPECIFICATIONS

Optical specifications

Light color, peak wavelength		red, 630nm
Working distance	(mm)	40 - 60
Lighting area		
Length	(mm)	74
Width	(mm)	147

Electrical specifications

Illumination extension cable	Extension cable must be ordered separately 4	
------------------------------	---	--

Continuos mode

Supply voltage	(V)	24
Current	(mA)	450
Power consumption	W	9.6

Pulsed mode

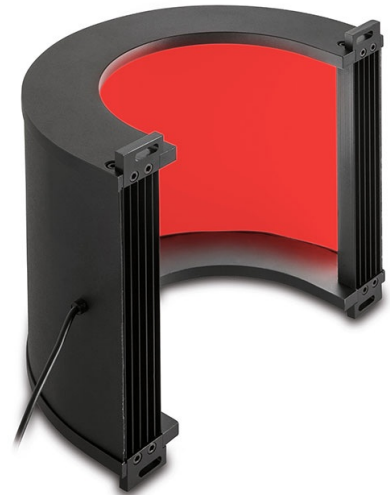
Supply voltage 1	(V)	36
Max pulse current 2	(mA)	1200

Mechanical specifications

Width x Length	(mm)	177.6 x 163
Aperture	(mm)	25
Height	(mm)	106.5

Environment

IP rating		00
-----------	--	----



NOTES

1. With constant driving voltage (36V recommended, 48V max). Duty cycle = 0-10 %. Max pulse width = 10 ms.
2. With constant driving current. Duty cycle = 0-10 %. Max pulse width = 10 ms.

ORDERING INFORMATION

All accessories including lighting extension cables (CB series) , diffusers (DFLT series) , polarizers (PLLT series) and mounting brackets (CMLT series) must be ordered separately.

COMPATIBLE PRODUCTS



MC4K100X-F Macro lens for 4k linescan cameras, magnification 1.00x, F-mount

MC4K100X-N Macro lens for 4k linescan cameras, magnification 1.00x, mount M42X1 FD = 10.56



LTDV1CH-17V Strobe controller 1 channel variable current 5 mA - 17A